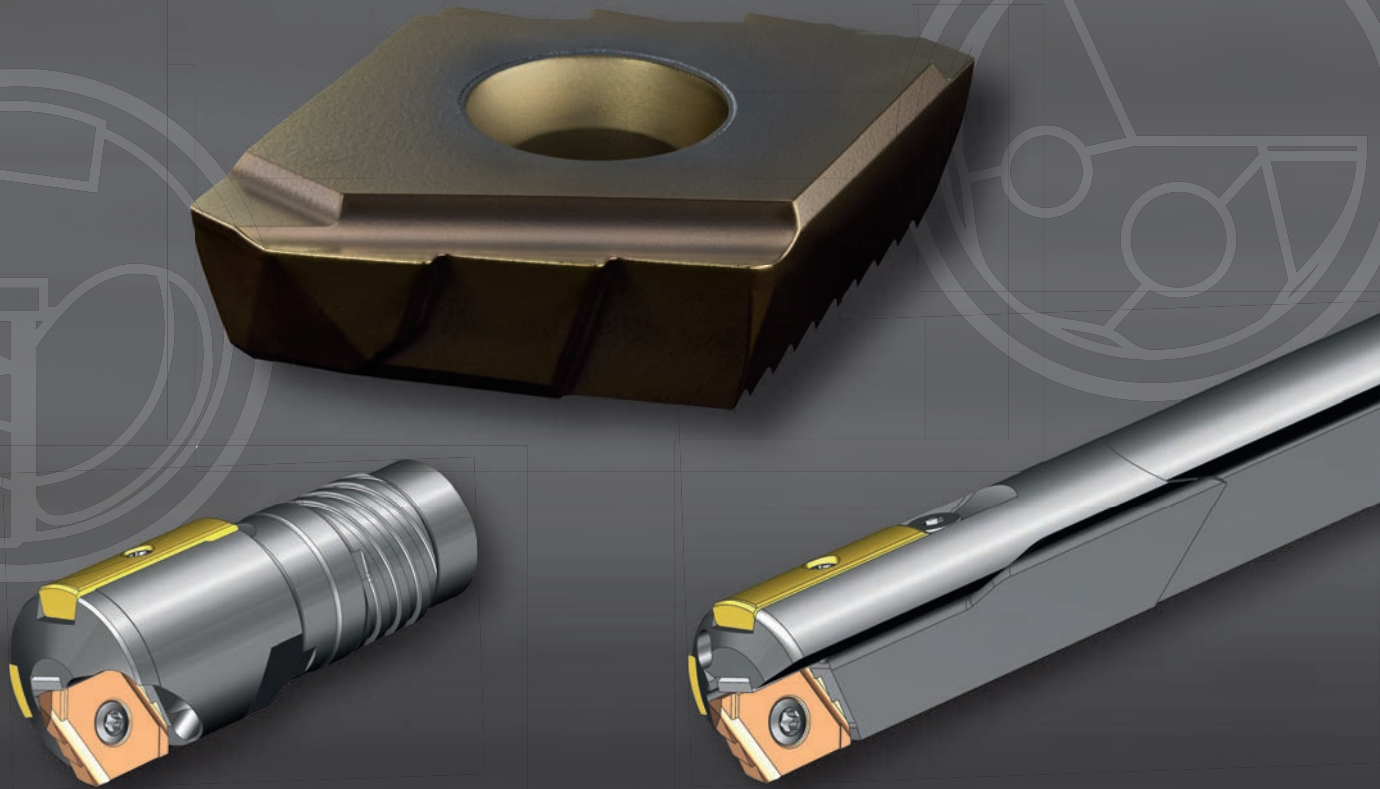


New high performance cutting insert 225S-91

Available ex stock as of 01. April 2021!



Always improving

P25B-1
P25B-2

P25BX-91

225S-91

botek[®]

DEEP HOLE DRILLING SYSTEMS
SOLID CARBIDE TOOLS

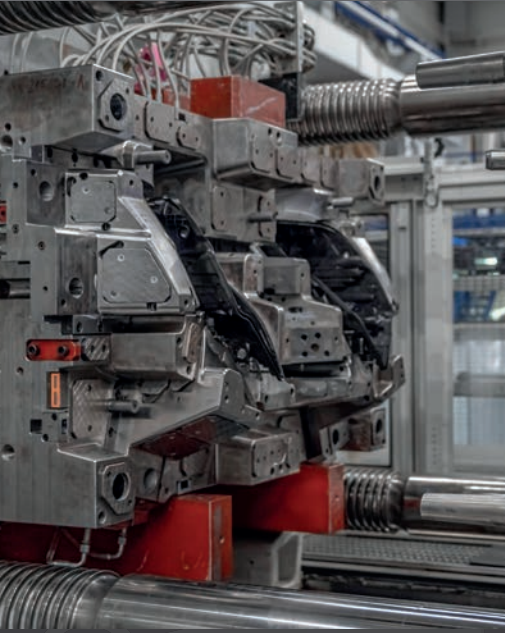


NEW Product

New cutting insert generation convinces
with excellent machining results!

Application examples:

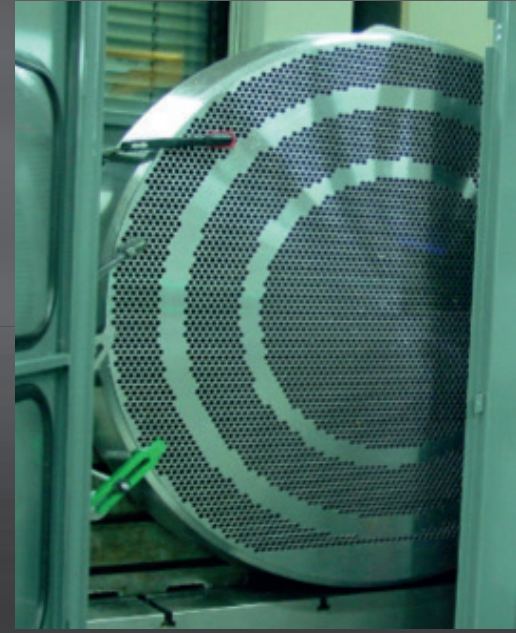
Mould and tool making



Automotive



Energy



Application: Mould making, bore dia. 22.00 mm with crossholes

Material: 1.2738 High-Hard

P25B-1



Tool life 6.5 m

P25BX-91



Tool life 7.5 m (+18%)

225S-91



Tool life 10.0 m (+50%)

Further information on our website www.botek.de → Downloads → Catalog/Order data

botek[®]

DEEP HOLE DRILLING SYSTEMS
SOLID CARBIDE TOOLS

botek Präzisionsbohrtechnik GmbH · Längenfeldstraße 4 · 72585 Riederich · Germany
P +49 7123 38 08-0 · E-Mail Info@botek.de · www.botek.de

250 000 290 / 07-2021